

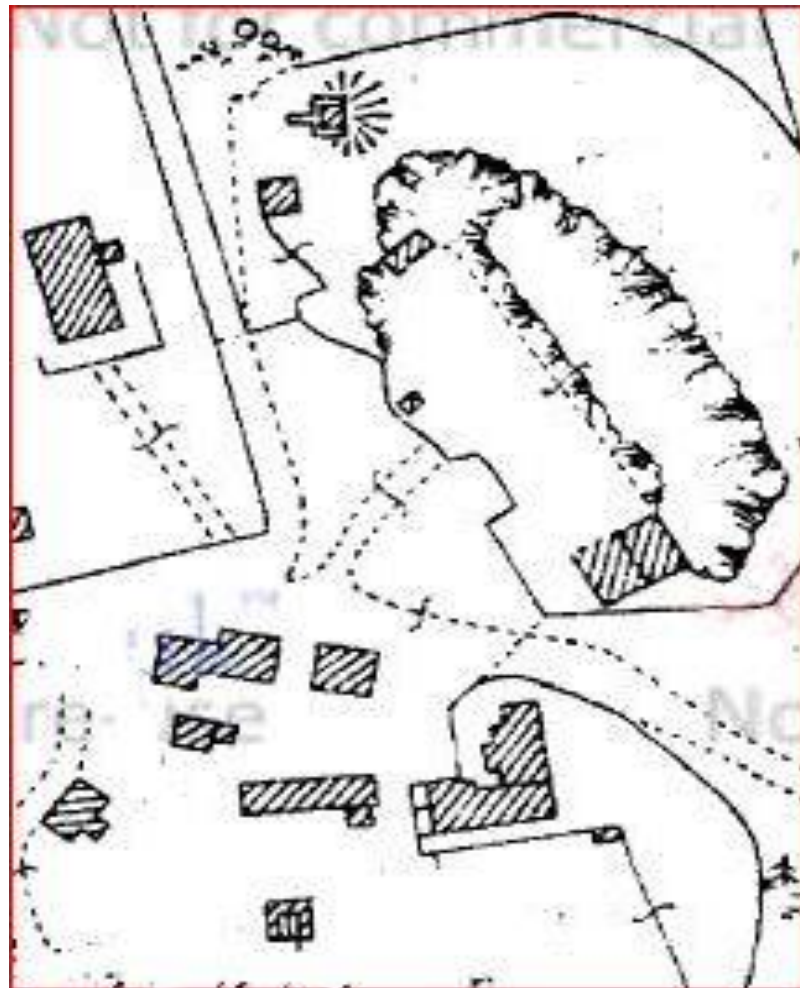


World War 1 and the Lickey Hills

6. Building case study – Work Pack for Pupils

In this case study you are being asked to think about how the building now used as the SCHOOL ROOM, was used during WW1. How it has changed since it was first built and why it has survived.

1. Look at the map showing the plan view of the site. Find the building on the plan. Is the shape the same or has it changed?



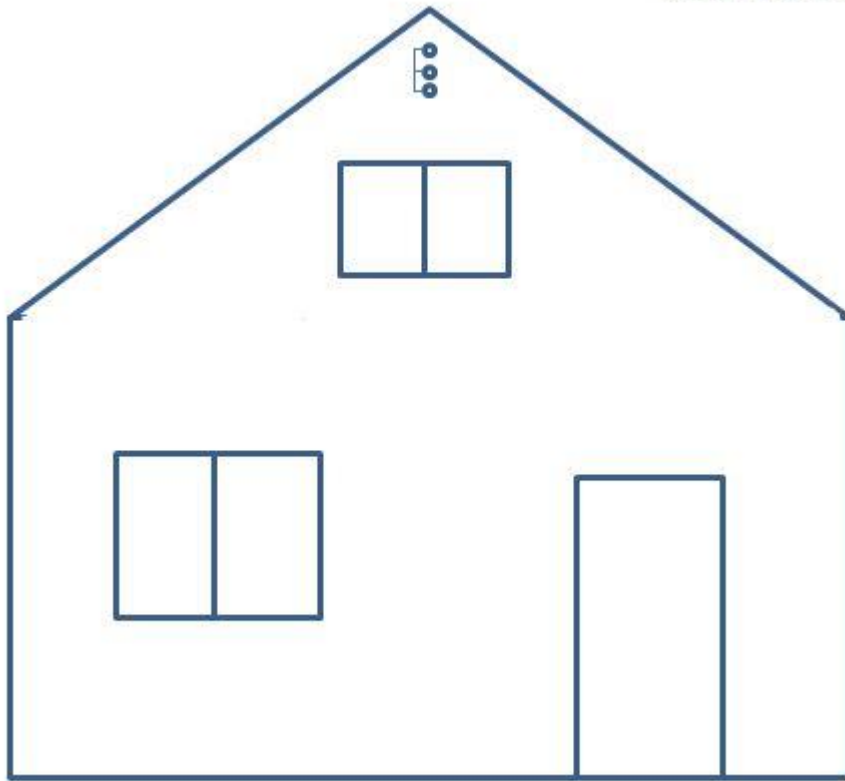
2. Look carefully at each side of the School Room building. Is there evidence that it has been changed since it was built? Record the changes you see by drawing and writing on the worksheet which shows each side (elevation) of the building.



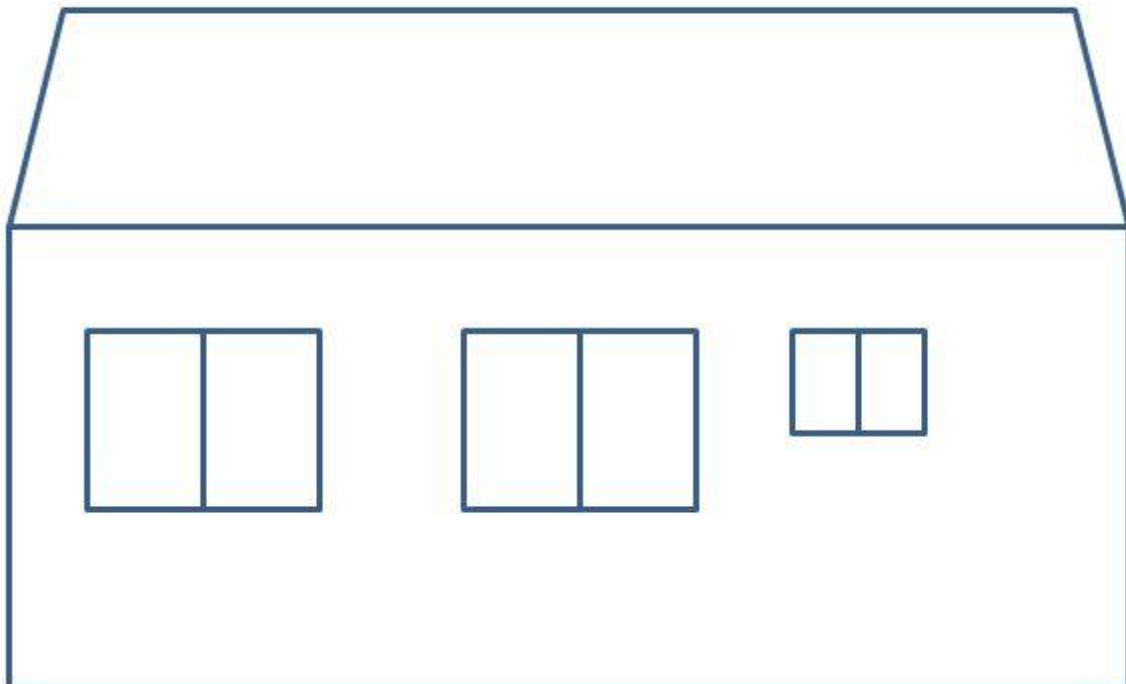
3. What do you think that this building might have been used for during World War One? You need to think about its original shape and its location on the site.
4. Why do you think that changes have been made to the building over the last 100 years?
5. Why do you think that the building has survived even though it is not protected or listed as being of historical interest?

Discuss what you have seen and what you think with others and your teacher.

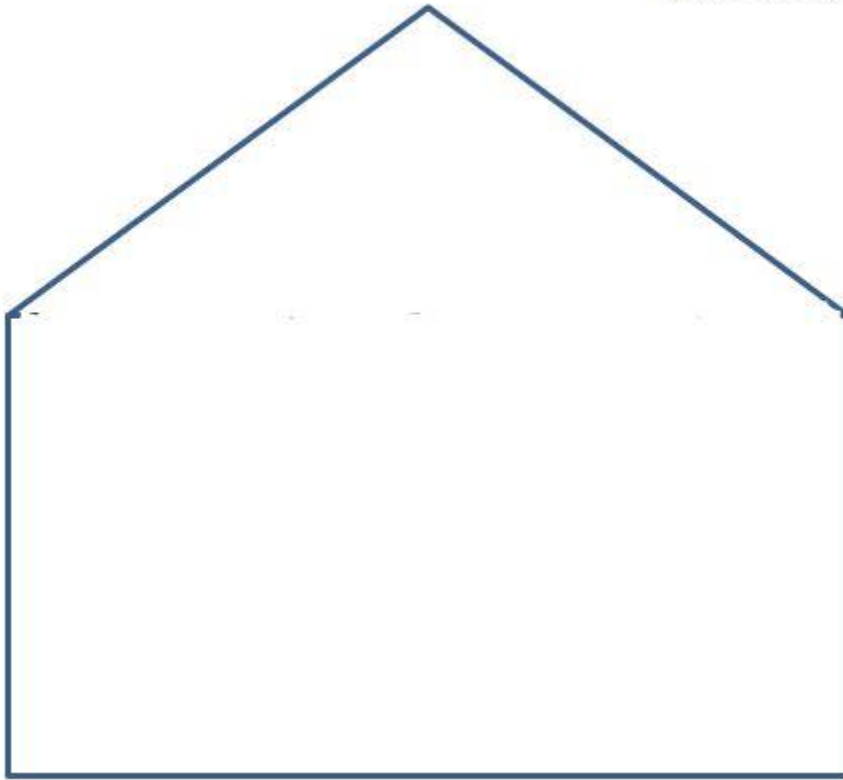
Front Elevation



Road Side Elevation



Rear Elevation



Park Side Elevation

